

# CALAVERAS COUNTY FIRE MUNICIPAL SERVICE REVIEW

Presentation to Calaveras LAFCO

by

Policy Consulting Associates

June 17, 2013



# MUNICIPAL SERVICE REVIEW

*An MSR is a State-required comprehensive study of services within a designated geographic area.*

- ◉ Growth and population projections for the affected area;
- ◉ The location and characteristics of any disadvantaged unincorporated communities within or contiguous to the SOI;
- ◉ Present and planned capacity of public facilities and adequacy of public services, including infrastructure needs or deficiencies (including needs or deficiencies related to sewers, municipal and industrial water, and structural fire protection in any disadvantaged, unincorporated communities within or contiguous to the sphere of influence);
- ◉ Financial ability of agencies to provide services;
- ◉ Status of, and opportunities for shared facilities;
- ◉ Accountability for community service needs, including governmental structure and operational efficiencies; and
- ◉ Any other matter related to effective or efficient service delivery, as required by commission policy.

# MSR PROCESS

- ◉ Agencies interviewed and documents requested
- ◉ Follow-up questionnaire sent
- ◉ Agency chapter drafted
- ◉ Chapter sent to agency for review for accuracy and to request any remaining necessary information
- ◉ Determinations and overview chapter drafted
- ◉ Document released for 48 day public review period
- ◉ 109 comments received and documented in the comment log
- ◉ Responses to and revisions as a result of each comment made in log and in document
- ◉ Revised draft released for review
- ◉ LAFCO to hold public hearing to solicit comments and consider the draft resolution for adoption

# SERVICE PROVIDERS

## *Fire and EMS*

Altaville-Melones Fire Protection District

Central Calaveras Fire and Rescue Protection District

Copperopolis Fire Protection District

Ebbetts Pass Fire Protection District

Foothill Fire Protection District

Jenny Lind Fire Protection District

Murphys Fire Protection District

Mokelumne Hill Fire Protection District

San Andreas Fire Protection District

West Point Fire Protection District

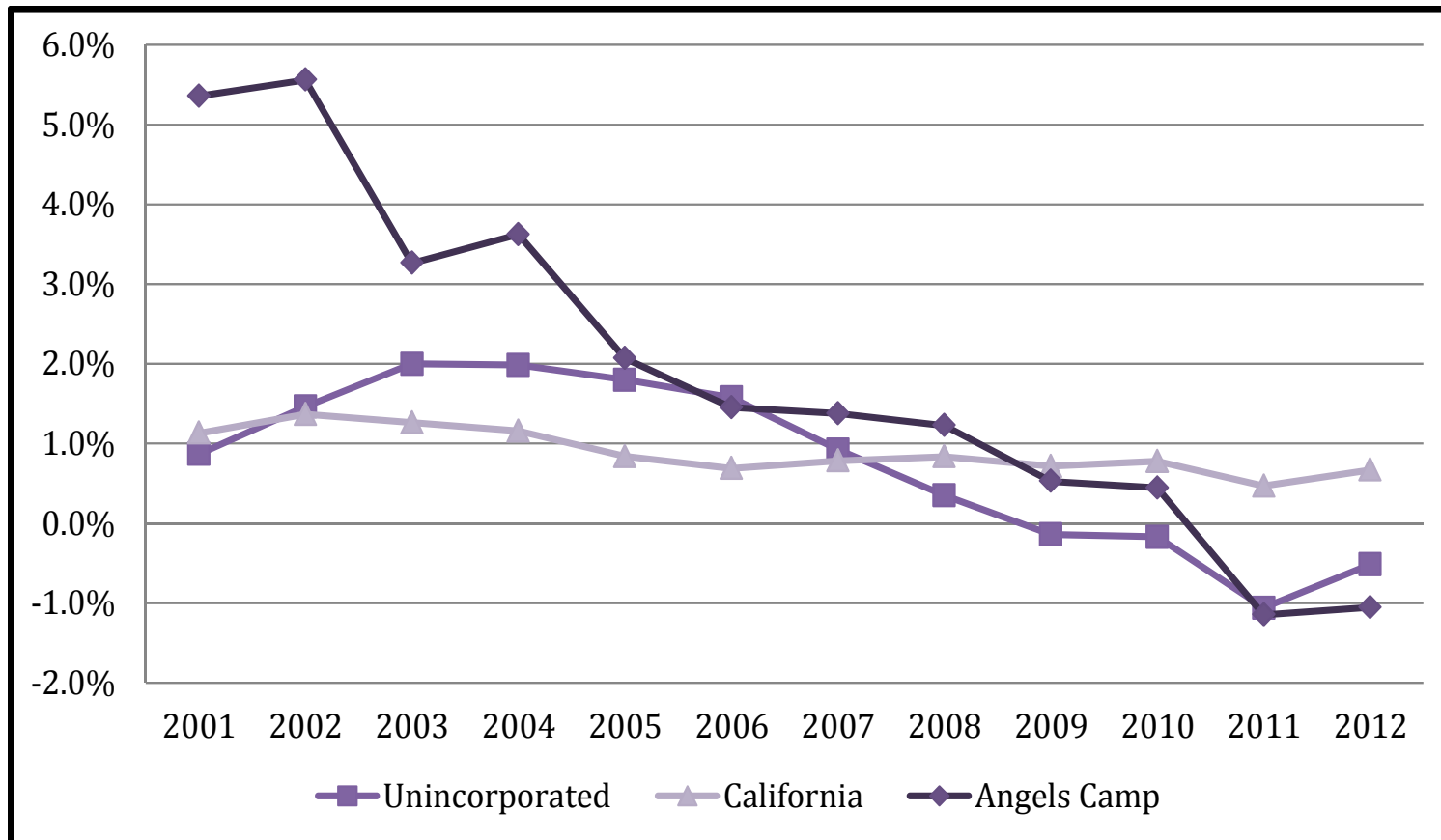
City of Angels Camp Fire Department

# SPHERE OF INFLUENCE

<i>Agency</i>	<i>Boundary Area (square miles)</i>	<i>SOI Area (square miles)</i>	<i>SOI Description</i>
Altaville-Melones FPD	77	77	Coterminous SOI
Central Calaveras FRPD	114	154	Annexable SOI
Copperopolis FPD	187	187	Coterminous SOI
Ebbetts Pass FPD	180	180	Coterminous SOI
Foothill FPD	101	101	Coterminous SOI
Jenny Lind FPD	61	61	Coterminous SOI
Murphys FPD	47	47	Coterminous SOI
Mokelumne Hill FPD	35	35	Coterminous SOI
San Andreas FPD	66	66	Coterminous SOI
West Point FPD	108	108	Coterminous SOI
City of Angels Camp FD	3.6	9.6	Annexable SOI

# GROWTH

## *Calaveras and Angles Growth Rates (2001-2012)*



*Source: Census and Department of Finance*



# PROJECTIONS

## *Countywide Annualized Growth by Method*

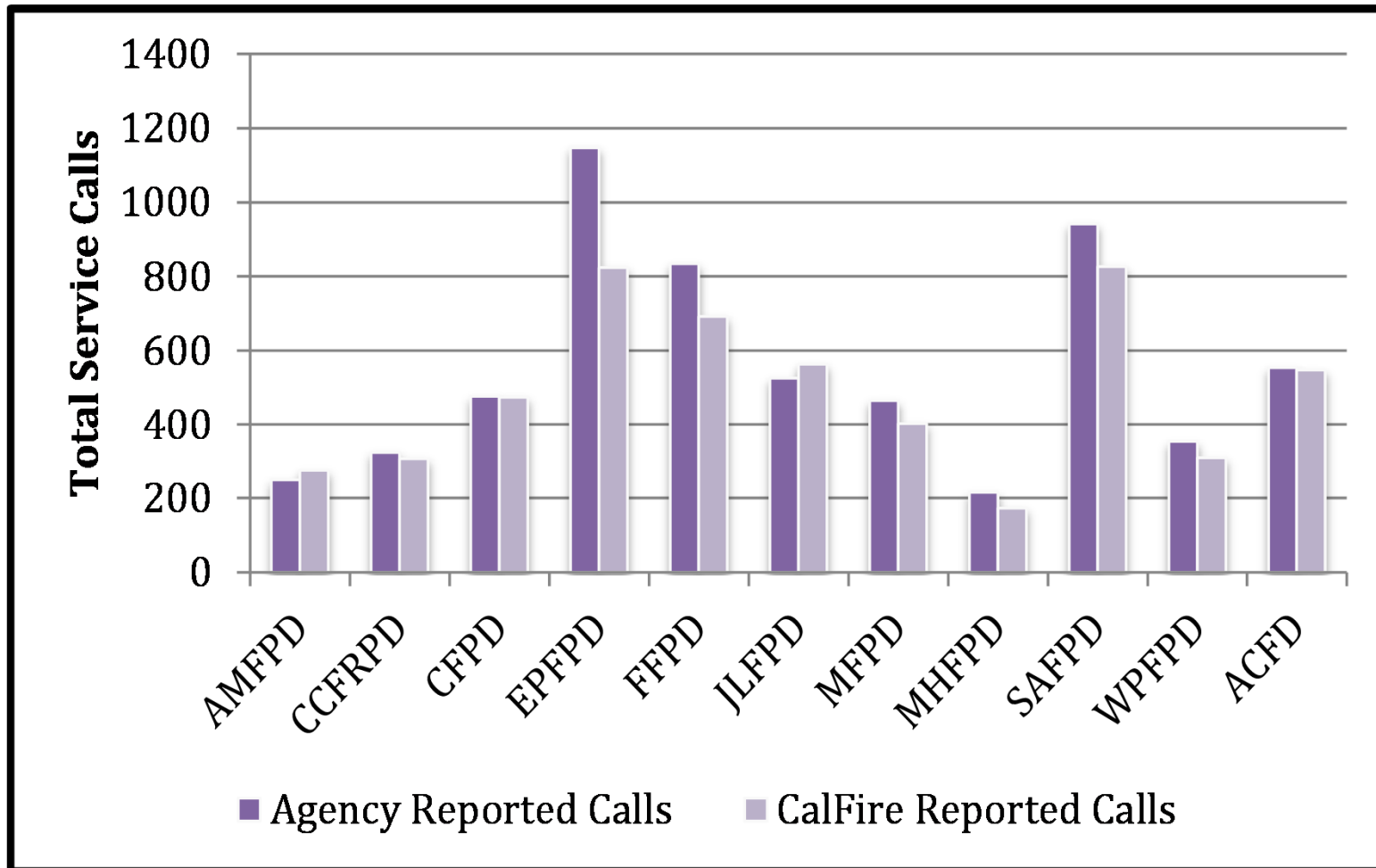
<i>Method</i>	<i>2010-2020</i>	<i>2020-2030</i>
DOF Projections	0.58%	0.93%
Department of Transportation Projections	-0.1%	0.36%
Planned and Proposed Developments Projections	2.28%	2.28%

## *City of Angels Camp*

- ◉ General Plan has growth projections based on historical growth in the City, the Regional Housing Needs Allocation Study, and the Water and Wastewater Master Plans.
- ◉ Projected growth is between 1.8 and 2.5%.

# DEMAND FOR SERVICES

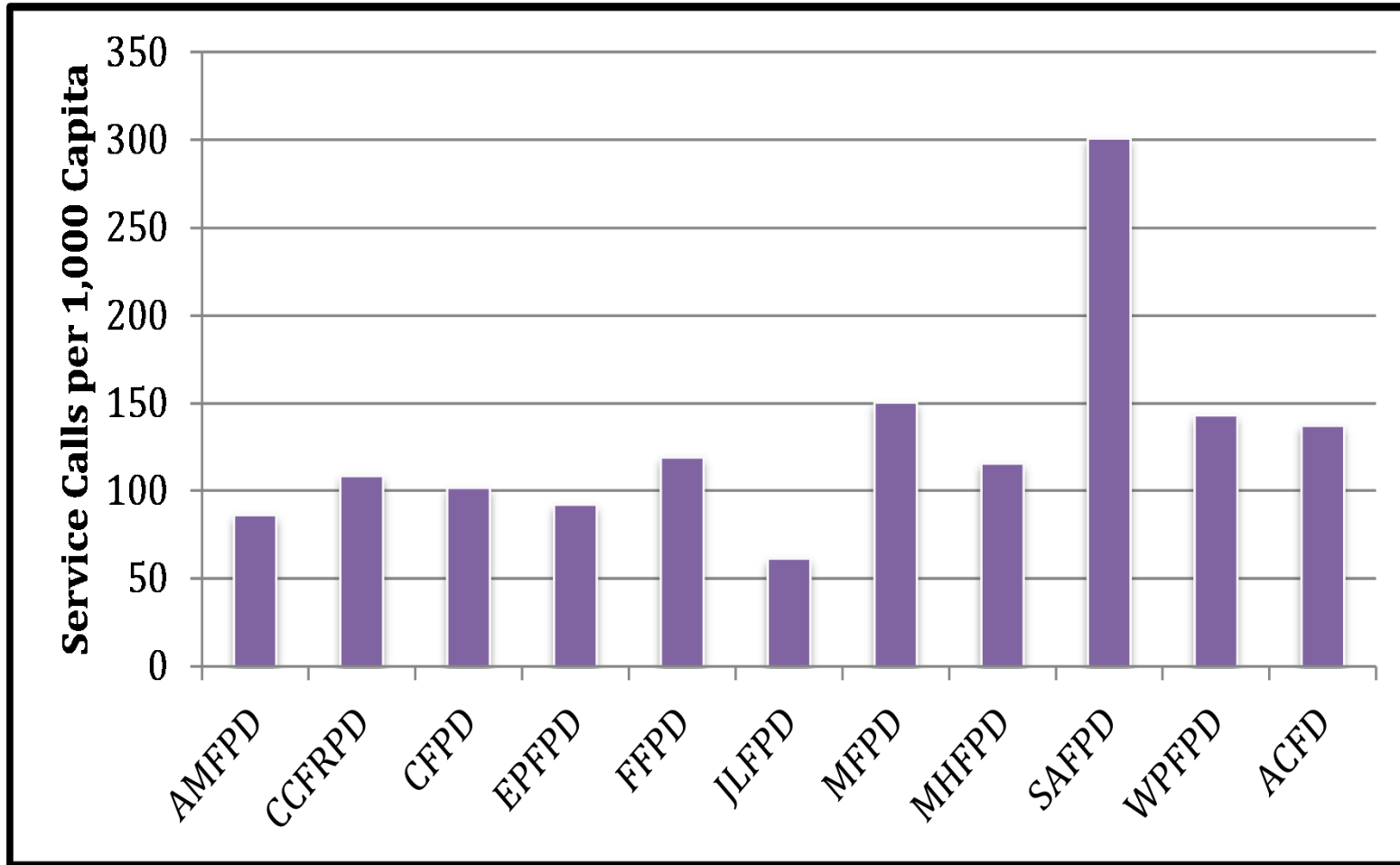
*Agency and CalFire Reported Calls (2011)*





# DEMAND FOR SERVICES

*Service Calls per 1,000 Residents (2011)*



# PLANNING AND MANAGEMENT

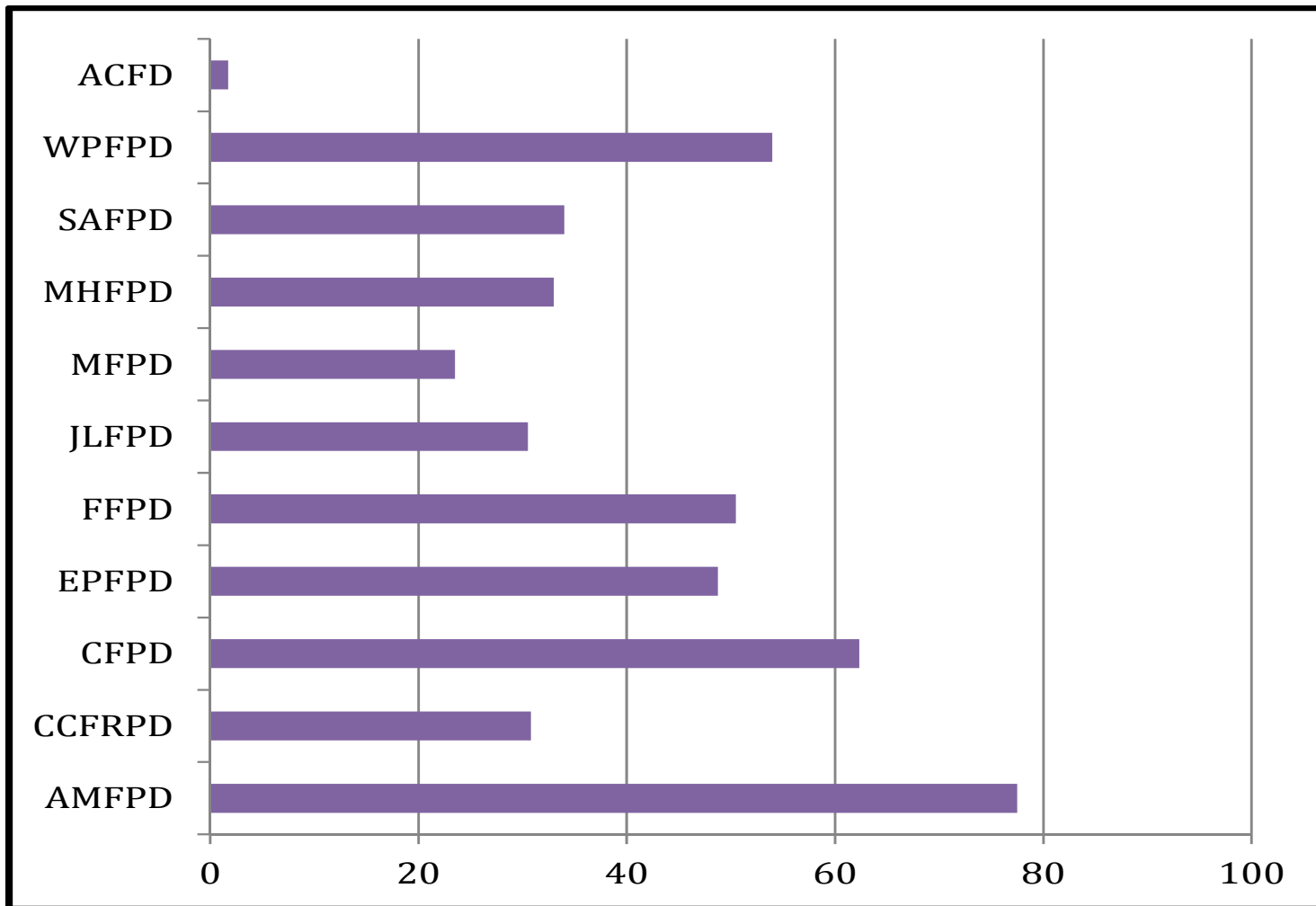
- ◉ Well-managed organizations generally 1) evaluate employees annually, 2) prepare a budget before the beginning of the fiscal year, 3) conduct periodic financial audits, 4) maintain relatively current financial records, 5) plan and budget for capital needs, and 6) conduct planning for future growth.
- ◉ Seven of the 11 providers evaluate staff at least annually.
- ◉ Nearly all of the providers prepare timely budgets, complete financial audits on a regular basis and were able to provide up-to-date financial records.
- ◉ Only EPFPD has a formal multi-year CIP.
- ◉ Agencies in Calaveras County generally conduct limited growth planning - The City of Angels Camp conducts formal advanced growth planning for its entire fire service area.

# SERVICE ADEQUACY

- ◉ Firefighter Certification Rates
- ◉ Response Times
  - Most agencies track response times but were unable to provide the requested median and 90<sup>th</sup> percentile times
  - CalFire tracks response times for all agencies, but its records differed from the districts' due to methodology
- ◉ ISO Ratings

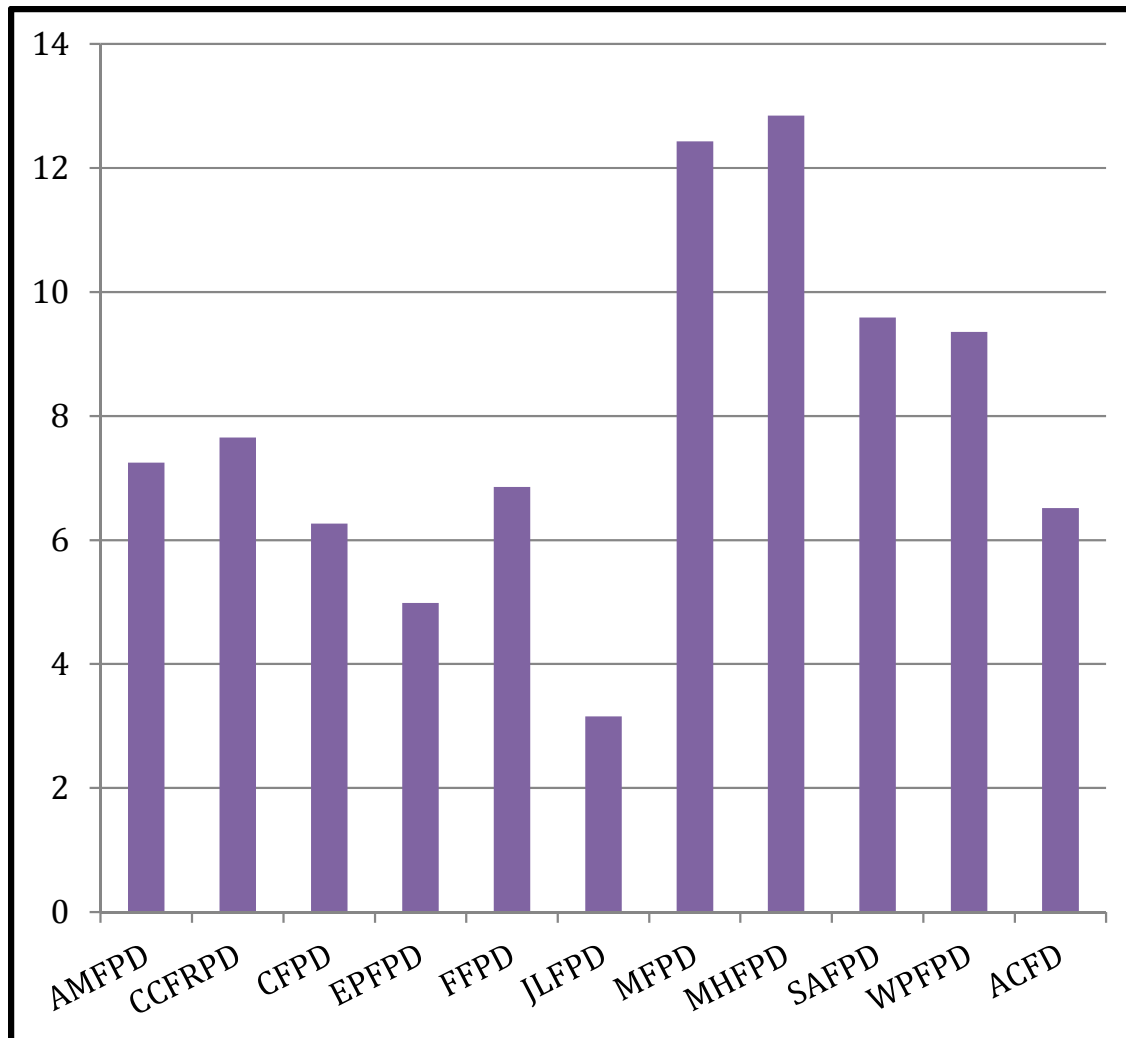
# SERVICE ADEQUACY

Coverage Adequacy - Service Area per Station



# SERVICE ADEQUACY

Coverage Adequacy - Firefighters per 1,000 residents



# ACCOUNTABILITY

- Accountability indicators chosen here are limited to:
  - 1) constituent interest in the agency's activities as indicated by interested candidates for board elections,
  - 2) agency efforts to engage and educate constituents through outreach activities, including a website, and
  - 3) transparency of the agency as indicated by cooperation with the MSR process and information disclosure.
- It is recommended that districts maintain a website.
- There is a lack of public interest in district activities as demonstrated by a lack of contested elections.
- Districts demonstrated accountability by performing outreach activities beyond what is legally required, and have a system in place to address complaints.
- With few exceptions, agencies lacked cooperation with the LAFCO MSR process by failing to provide information or provide information in timely manner.

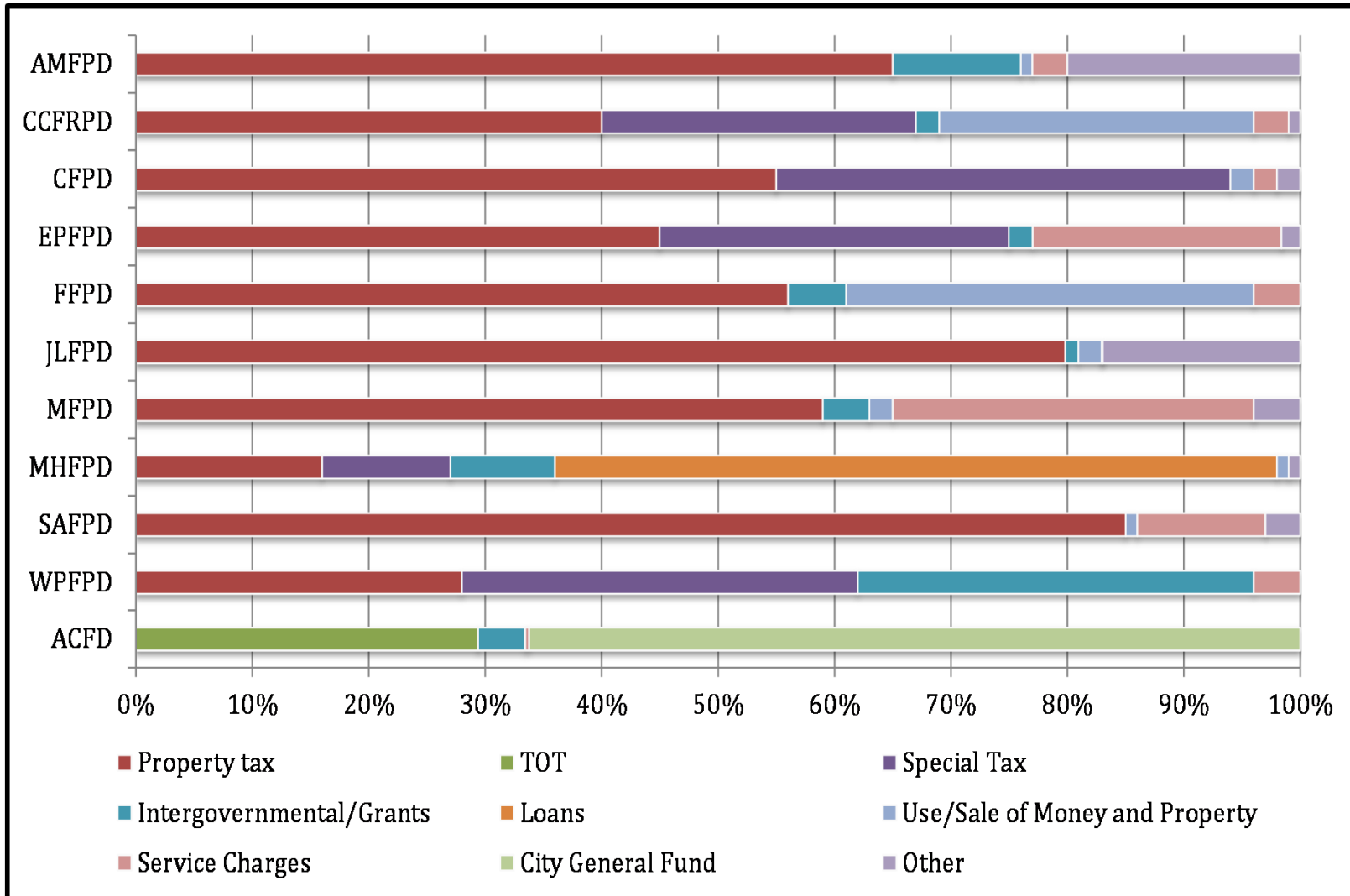
# INFRASTRUCTURE NEEDS

- ◉ Local fire agencies serving Calaveras County operate 26 fire stations - 12 are in good or excellent condition, 8 in fair condition and 6 in poor condition.
- ◉ Several of these fire stations require replacement or upgrades.
- ◉ Dispatch services are provided by CalFire Emergency Command Center through a contract with Calaveras County.
- ◉ Most fire agencies are satisfied with the level of dispatch service.
- ◉ All local fire service providers in Calaveras are currently working together to set up a countywide closest-unit response system.



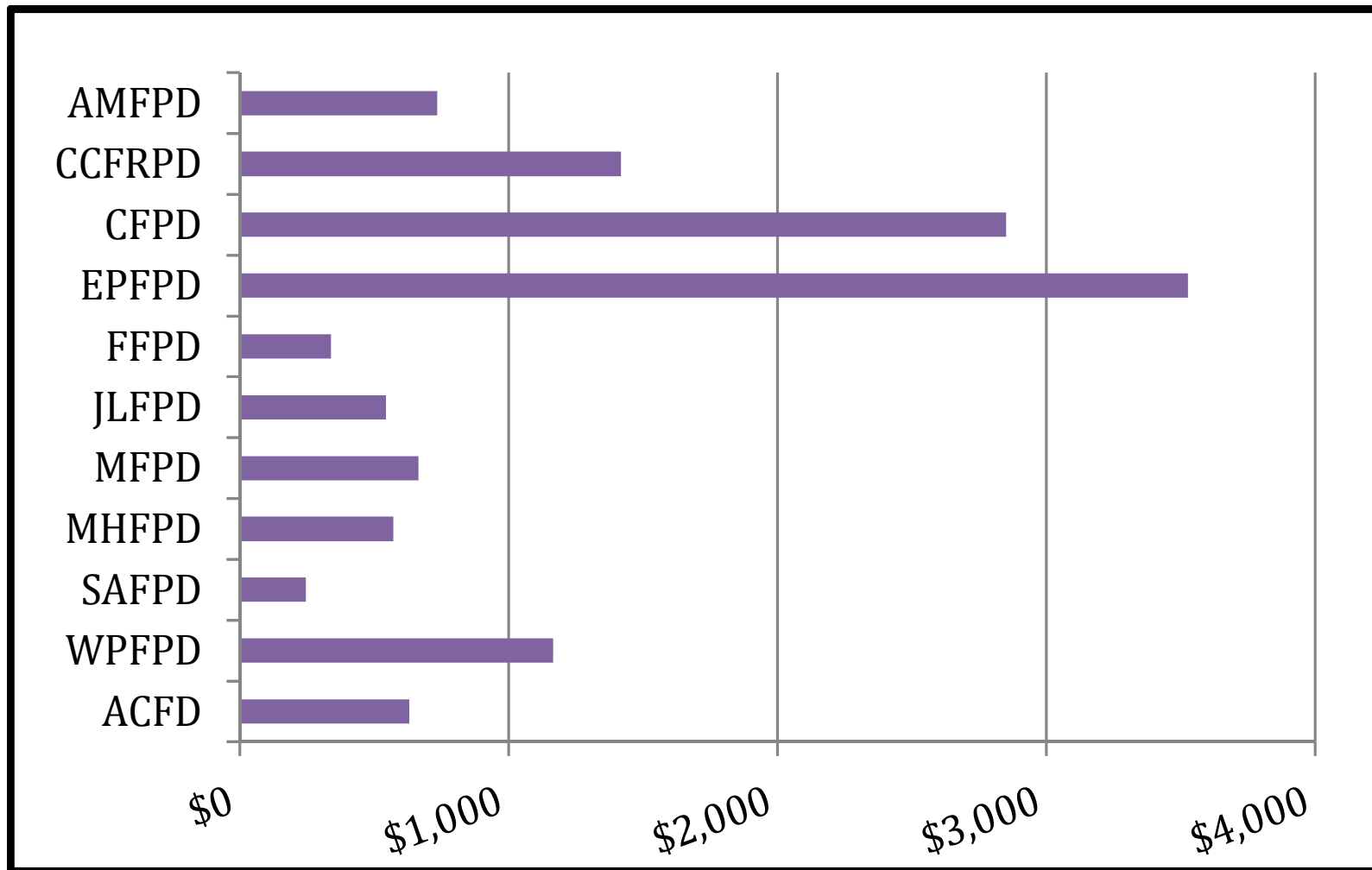
# FINANCING

## Revenue Sources (FY 10-11)



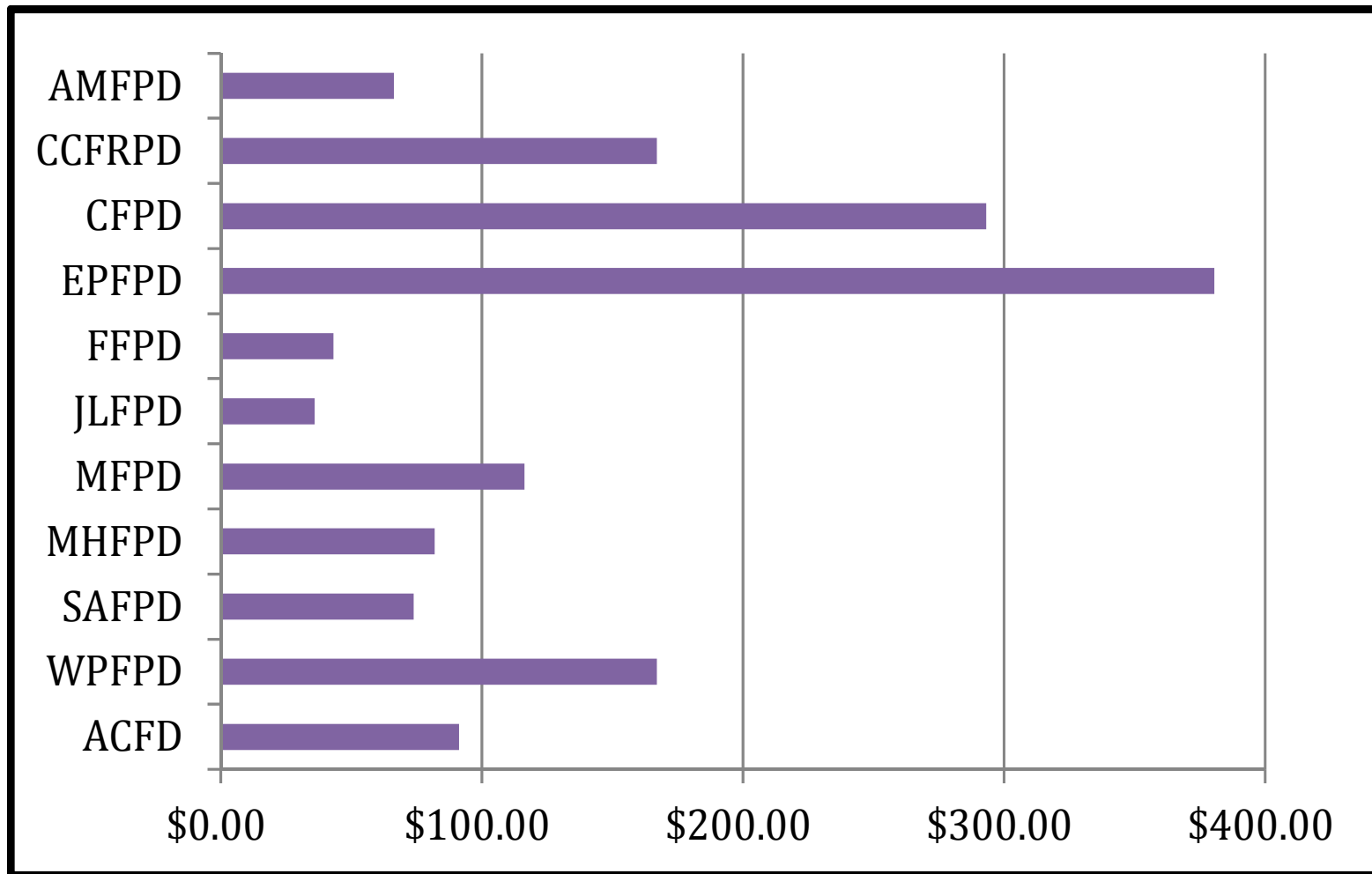
# FINANCING

## Operating Expenditures per Capita (FY10-11)



# FINANCING

## Operating Expenditures per Service Call



# GOVERNANCE OPTIONS

- ◉ Forms of consolidation include
  - 1) consolidate into a newly formed fire district,
  - 2) consolidate into existing fire agencies, and
  - 3) formation of a joint powers authority for provision of fire service
- ◉ 2 geographical consolidation options identified - regional and countywide
- ◉ Regional Consolidation
  - Northwestern Calaveras (Foothill and Jenny Lind FPDs)
  - SR 4 Corridor (Murphys FPD, Altaville-Melones FPD, Copperopolis FPD, Angles Camp FPD, and Ebbetts Pass FPD)
  - SR 26 Corridor (Mokelumne Hill FPD, Central Calaveras FPD, West Point FPD, and San Andreas FPD)

# GOVERNANCE OPTIONS

## Benefits of Consolidation

- ◉ Promotes efficiency, professionalism and public safety.
- ◉ More efficiently coordinate deployment of fire personnel when multiple incidents occur simultaneously or large incidents occur
- ◉ May offer opportunities to share and/or reconfigure fire station locations, training and communication facilities, and apparatus
- ◉ Cost savings from reduced management personnel and insurance costs, and possibly closing of redundant stations
- ◉ May allow districts to sell surplus vehicles, reducing the overall age of fleet
- ◉ Enhanced administrative staffing levels may lead to enhanced management practices through sharing of full-time administrative staff